

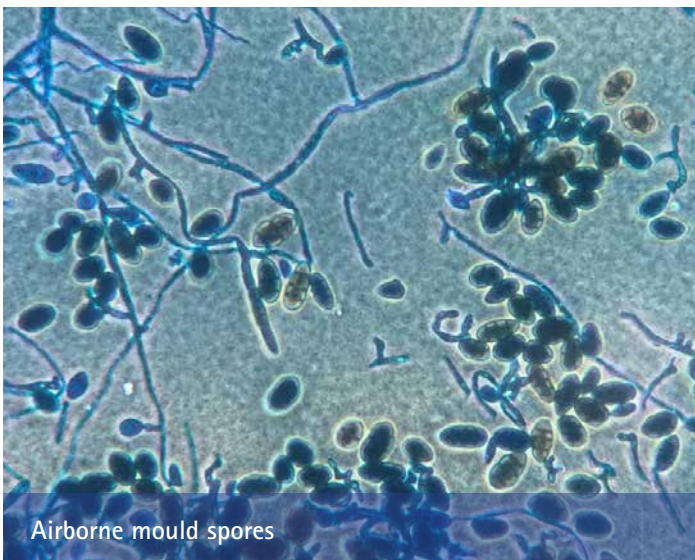
EnviroNote 1129 - May 2023

Assessment Suite for Flood Damaged Buildings



Eurofins | Focus are proud to introduce our newly developed sampling suite specifically designed to address the validation needs of flood-damaged buildings requiring insurance and loss adjusting.

We understand the gravity of moisture and sewage contamination in such situations, which not only poses significant health risks due to exposure to mould and human waste present in floodwaters but also serves as a crucial guideline for determining the required restoration work to repair buildings to a safe standard before reoccupation.



Airborne mould spores

Our Capabilities

At Eurofins | Focus, we possess the cutting-edge capability to deliver rapid and precise results for mould, *E. coli*, and faecal coliform environmental contamination. Our state-of-the-art laboratories, located across New Zealand, are well-equipped to provide comprehensive information essential for insurance companies and loss adjusters in making critical decisions that have a direct impact on human health and the restoration process.

By leveraging our advanced sampling suite, insurers and loss adjusters can gain valuable insights into the extent of damage caused by floods, allowing them to accurately assess the necessary restoration measures to ensure buildings meet current safety standards. Our efficient and accurate testing procedures enable swift decision-making, facilitating prompt remediation efforts and ultimately minimising health risks for occupants.



Extensive water damage caused by flooding

Why choose Eurofins | Focus for Flood Damage Testing?

Eurofins | Focus is committed to maintaining the highest standards of quality and reliability. We prioritise the well-being of individuals and understand the significance of providing reliable data that supports informed decision-making in insurance and loss adjustment processes. With our expertise and state-of-the-art facilities, we are fully equipped to meet the diverse needs of our clients, delivering timely and precise results that instil confidence and aid in the restoration of flood-damaged buildings.

Contact Eurofins | Focus today to learn more about our specialised sampling suite and how our comprehensive services can contribute to efficient insurance and loss adjustment processes, safeguarding human health and facilitating the restoration of flood-affected structures to a safe, healthy and habitable condition.



Who are Eurofins | Focus?

Eurofins | Focus (formerly Focus Analytics) is a group of three New Zealand based environmental testing laboratories, specialising in mould and asbestos analysis for residential and commercial premises. With laboratories in Auckland, Tauranga and Christchurch, Eurofins | Focus offer a nationwide service. All three laboratories are accredited by IANZ to the ISO/IEC17025 Standards and cater to all job types from single sample analysis to large complex projects.



eurofins | Focus

Our IANZ accredited asbestos laboratories are conveniently located in Auckland, Christchurch and Tauranga.

Our laboratories are supported by the broader network of Eurofins Environment Testing laboratories and Service Centres to ensure we can service all regions and requirements.

ACCREDITED
IANZ
TESTING LABORATORY

For any enquiries contact the **Eurofins | Focus** team on **+64 9 525 0568** or admin@focusanalytics.co.nz

Auckland Laboratory
Unit C1 / 4 Pacific Rise
Mount Wellington, Auckland, 1060

Tauranga Laboratory
1277a Cameron Road
Gate Pa, Tauranga 3112

Christchurch Laboratory
8 Opawa Road
Waltham, Christchurch 8023